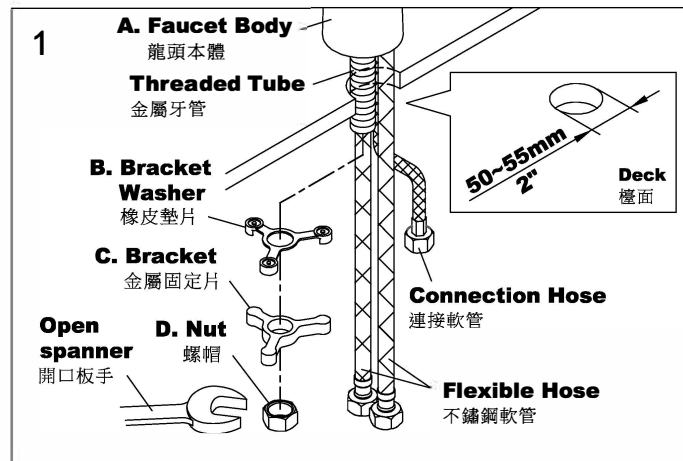


# INSTALLATION INSTRUCTIONS

## Kitchen Faucet W/ Sprayer 抽拉式龍頭(附噴槍)安裝說明



### CAUTION : Prevent The Risk Of Product Damage.

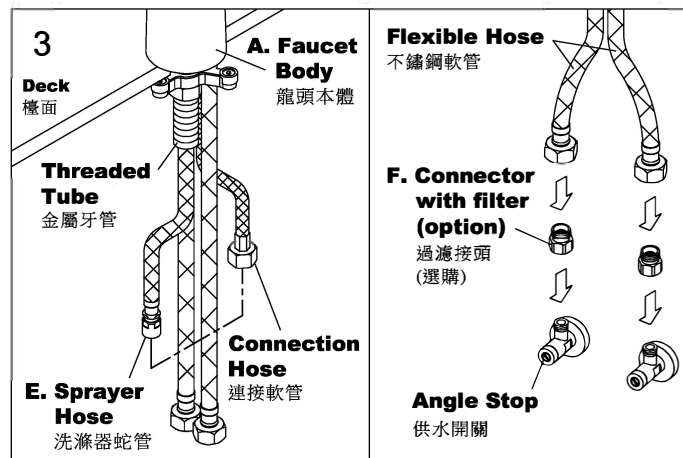
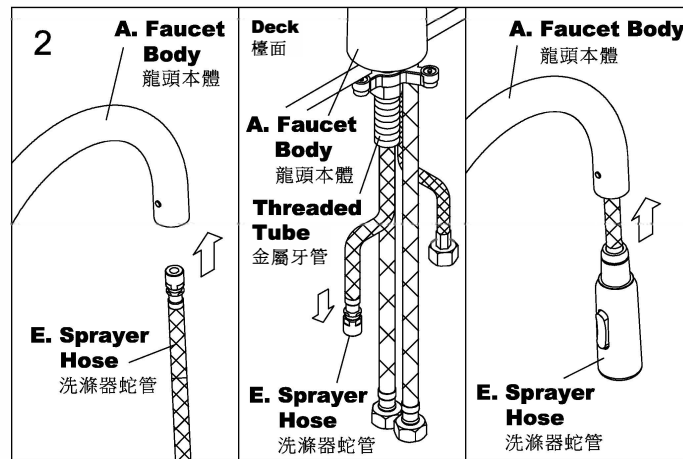
注意：為增加產品使用壽命，請依說明清潔供水管路。

a. Turn on the angle stops (water suppliers) and run for 1 minute before connecting supply hose (flexible hose) to faucet body. or b.

安裝編織管之前，先把供水開關全開排水一分鐘。或 b./

b. Connect and tighten the faucet and angle stops with supply hose (flexible hose) to finish installation, and then remove the aerator, fully turn on both hot and cold water to run for 1 minute; turn off the water and reinstall the aerator.

把龍頭、供水開關及編織管接好並鎖緊之後，把起泡器移開，把熱水及冷水全部轉開一分鐘，然後把水關掉再把起泡器裝回去。



1. Set the **Bracket Washer, Bracket, and Nut** in order after passing the **Threaded Tube, Braided Hose, and Connection Hose** through the deck hole. After confirming the position and direction of Faucet, tighten the **Nut** with a **Open Wrench** to fix the Faucet.

將不鏽鋼軟管、連接軟管和金屬牙管穿過洗臉盆(檯)洞口後，從金屬牙管下方依序套入橡皮墊片、金屬固定片和螺帽，確認方向位置後，利用開口扳手鎖緊螺帽固定龍頭。

2. Insert the **Sprayer Hose** to the Spout of Faucet until Sprayer fix on the buckle of Spout.

將洗滌器蛇管穿過龍頭本體出水管直到洗滌器端卡入出水管扣件。

3. Tighten the nut to connect the **Sprayer Hose to Connection Hose**, and then screw the **Braided Hose** to the cold and hot **Angle stops**.

將洗滌器蛇管與連接軟管鎖緊，再將冷熱進水的不鏽鋼軟管鎖固於冷熱水供水開關。

4. Check if the Sprayer Hose touches the Bottom Panel. If not, go on to Step 5. If yes, skip to Step 6.

確認拉直後的洗滌器蛇管是否碰到底板，如沒有碰到底板，作步驟5，如有碰到底板，作步驟6。

5. Disassemble the **Gravity Ball** with a **Phillips Screwdriver** as shown, and then fix the **Gravity Ball** on the **Sprayer Hose** before the folding part.

如圖將重力球以十字螺絲起子拆解後鎖於洗滌器蛇管折彎處上方。

6. Disassemble the **Gravity Ball** with a **Phillips Screwdriver** as shown, and then fix the **Gravity Ball** on the **Sprayer Hose**, at 200mm (8") from the **Bottom Panel**.

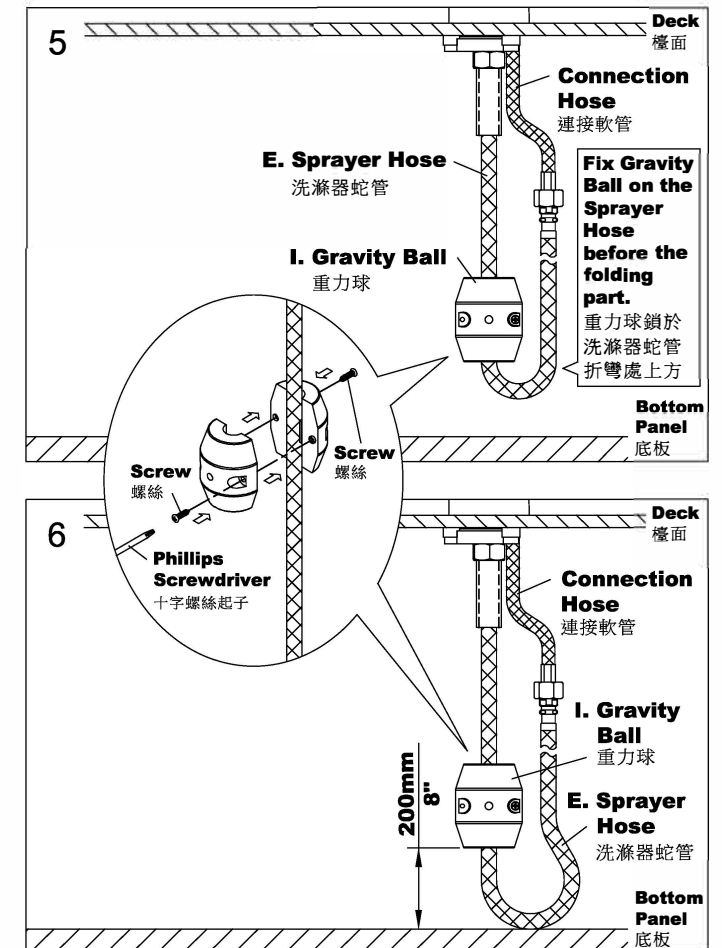
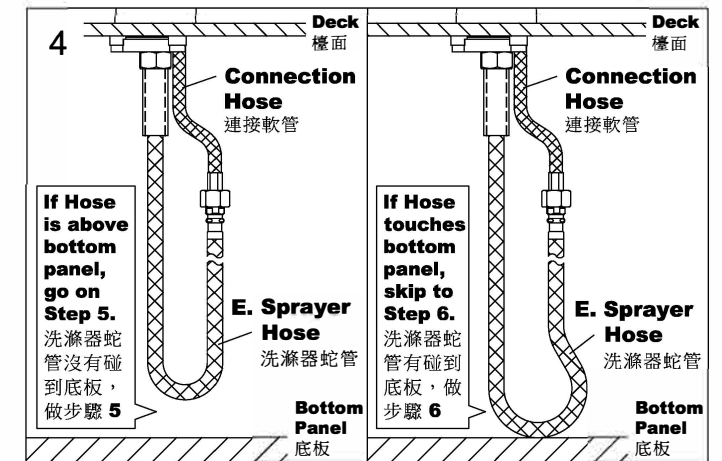
如圖將重力球以十字螺絲起子拆解後鎖於洗滌器(蛇管)上距離底板200mm(8")處。

7. Make sure all the fixing joints are locked properly, and the installation is completed.

測試水龍頭各接點鎖固處正常即完成安裝。

**Note:** It is recommended that the distance between the deck top and the bottom panel be greater than 500mm, so as to facilitate the drawing length of Sprayer Hose to reach the maximum length. If it is less than 500mm, the drawing length will be shortened.

注意：建議檯面與底板距離大於500mm，以利洗滌器蛇管抽拉長度達最大值，如不夠500mm會使抽拉長度縮短。



## FIXING CONTENTS

組配件內容

